


7



Your results will be displayed and saved to the device prior to transmission starting.


8





Once data transmission starts the  symbol will appear on the LCD.

9



After successful transmission the device will display .

If the device is unable to connect to the network, it will display  and the measurement will be sent on the next successful device connection.

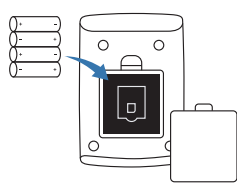
When the device has pending measurements to send, it will display the  symbol.

For more information, see the full instruction manual.

Pylo Quick-Start Guide

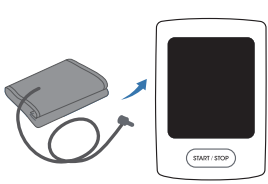
LTE Blood Pressure Monitor
PYLO-900-LTE

1



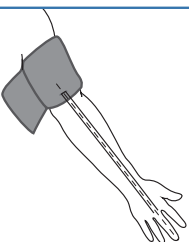
Install the included 4 AA batteries into the compartment on the back of the device.

2



Connect the cuff to the port labeled 'Cuff Port' on the side of the device.

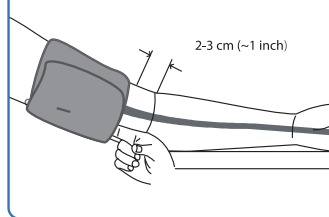
3



Roll or push up your sleeve to expose your left upper arm.

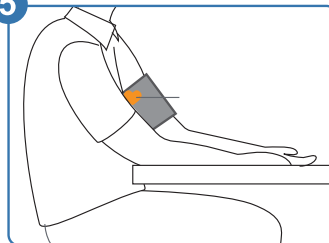
Hold your arm with palm facing up and position the cuff around your arm while aligning the air tube toward the center of your arm.

4



Wrap the end of the cuff over your arm to secure it in place. Don't make it too tight — a finger should be able to fit between the cuff and your arm.

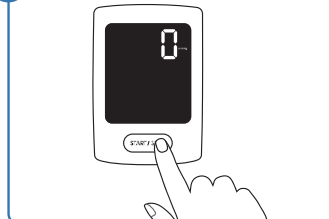
5



Rest your arm on a flat surface so that the cuff is about the same level as your heart.

Avoid crossing your legs and keep your back straight.

6



Press the 'START/STOP' button to start a measurement. The cuff will automatically inflate, take a reading and then deflate.

Remain still until the cuff deflates completely.