

TelerPM™ Lancing Device Package Insert

INTENDED USE

The TelerPM Lancing Device is used with the TelerPM Lancets to draw a drop of capillary blood from the fingertip for blood glucose testing or other testing. It is intended to be used on a single patient age 6 months and up. And it should not be shared.

LANCET PENETRATION DEPTH RANGE

The number 1-5 at the Depth Setting Window is a depth gauge, it indicates the depth that the lancet will go into the skin. The lancet penetration depth range is at 0.02-0.08 inch with number 1 being the shallowest and 5 being the deepest. It is for reference only when you use a TelerPM Lancing Device with a TelerPM Lancet. If you use another manufacturer's lancets, adjust the depth setting according to skin status and blood volume needed.

Level	Level 1	Level 2	Level 3	Level 4	Level 5
Penetration depth range	0.02 inch	0.04 inch	0.06 inch	0.07 inch	0.08 inch
Deviation: ±0.01 inch					

CLEANING AND DISINFECTING

Clean and disinfect the lancing device before and after each use.

1. Wash hands with soap and water, and dry thoroughly.
2. Wipe the entire lancing device surface and the inside of the lancing device cap with a Super Sani-Cloth to clean it.
3. Use a new Super Sani-Cloth and repeat step 2 to disinfect it. Make sure to keep cleaning the surface and the inside of the cap for 2 minutes.
4. Wash hands with soap and water, and dry thoroughly.

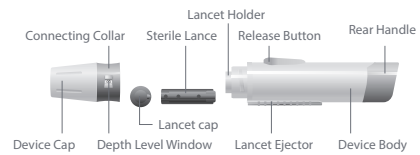
Note:

- Failure to follow the instructions may damage the lancing device and stop it from working properly.
- Do not get any moisture into openings.
- If blood gets on the lancing device, clean and disinfect it before anyone else touches it.
- Always use the same cleaning product for both cleaning and disinfecting.
- If there is residual soil on the lancing device, repeat step 2 and step 3 above.
- A separate Super Sani-Cloth is suggested to be used for cleaning and disinfection.

INSTRUCTIONS FOR USE

Wash your hands before and after each blood sample collection with soap and warm water, or wipe your finger with an alcohol pad. Dry your hands completely before lancing your finger.

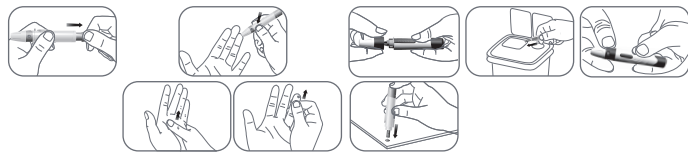
Note: Make sure there is no soap, alcohol or lotion on the puncture site. Residual alcohol may lead to inaccurate readings.



Read the instructions carefully before using the lancing device.



1. Remove the Device Cap and Connecting Collar by holding and turning Connecting Collar counterclockwise and then pulling straight off the lancing device.
2. Insert a lancet into the Lancet Holder of the lancing device firmly until it comes to a complete stop and snaps into the Lancet Holder.
3. Twist the Lancet Cap off the lancet. Save the Lancet Cap for lancet removal and disposal described in step 8 below.
4. Return the Lancet Ejector to its back position. Carefully place the Connecting Collar back onto the lancing device and turn it clockwise to tighten it.
5. Hold the Connecting Collar firmly and turn the Device Cap to adjust the lancet penetration depth and choose the setting from 1 through 5 in the Depth Level Window.
Note: Smaller numbers are for a shallower puncture with less pain and work best for children and most adults, while larger numbers are for deeper punctures and work best for people with thick skin. Try a small number first and increase the number until you find the correct depth setting to get a proper blood sample.



6. Pull back the Rear Handle until it clicks to load the lancing device.
7. Hold the lancing device firmly and vertically against the side of the finger and press the Release Button to prick the skin and obtain a drop of blood. Gently squeeze and massage the finger until a round drop of blood forms on the skin. Apply the blood sample to the test strip, following instructions in your user's manual. Do not use the blood sample if the blood smears. Gently squeeze another drop of blood until you get a round drop of blood or puncture a new site.
8. Remove the connecting Collar by turning it counterclockwise then pulling it straight off the lancing device. Place the Lancet Cap on a hard surface then push the Lancet Tip into the Lancet cap.
9. Slide the Lancet Ejector forward to release the used lancet in an appropriate container. Do not use your fingers to pull the used lancet out to prevent injury from the lancet. Dispose of used lancets and follow local regulations for proper disposal to prevent injury from the lancets.
10. Place the Device Cap and Connecting Collar back onto the lancing device, and turn the Connecting Collar clockwise to tighten it.

Caution

1. Do not immerse the device into any liquid.
2. Do not point the lancing device at you or other people.
3. Clean and disinfect the entire lancing device surface and the lancing device cap carefully to prevent infection and contamination.
4. Do not use the lancet if the lancing device falls to the ground or surfaces with a lancet inserted. Pick it up with care, discard the lancet and insert a new lancet before use.
5. For use only on a single patient. Do not use it on more than one patient. Improper use of lancets and the lancing device can increase the risk of inadvertent transmission of bloodborne pathogens, particularly in settings where multiple patients are tested.
6. If the lancing device is being operated by a second person who is providing testing assistance to the patient, the lancing device should be cleaned and disinfected prior to use by the second person. The second person must wear protective gloves for all the steps when providing testing assistance.

7. If the lancing device has come into contact with blood, it can transmit infections. The lancing device and lancets must not be used by other people, even by family members. Healthcare professionals must not use them to obtain blood from different people.
8. If the lancing device or the lancet was dropped or exposed to other mechanical stress, check it for damages or cracks. Do not use the lancing device or lancets if they are damaged.
9. If the lancing device falls with a lancet inserted, the lancet may become loose in the lancet holder, you cannot use it anymore to obtain blood. In rare cases, the lancet could protrude from the opening in the cap and you could injure yourself on it. Therefore, do not touch the front of the cap. If the lancing device falls, pick it up with care.

Warnings

1. Read the instructions carefully before use.
2. For single use only. Use a new Lancet each time you test. Discard the used lancet after each use. Do not re-use. Do not leave the used lancet in the lancing device.
3. Do not use the lancet if the Lancet Cap is already removed or broken.
4. Do not use lancets beyond the expiration date printed on the box.
5. If an individual is under the age of 18, the lancet and lancing devices must be used by an adult or under the supervision of the adult.
6. Use with caution whenever the Lancet Tip is exposed.
7. Consult a healthcare professional before using the lancing device and selecting the setting for the first time on children to prevent any injury.
8. Keep out of reach of children.
9. Dispose of used lancets and follow local regulations for proper disposal to prevent injury from the lancets.
10. It is strongly recommended to use the TelerPM Lancing Device and the TelerPM Lancets for the best compatibility and proper performance. If you use the TelerPM Lancing Device with another brand of lancets, make sure the lancets are compatible the TelerPM Lancing Device. Consult a health care professional before use.
11. When you insert the lancet, please do not press the release button if the device cap is removed.

Storage Conditions:

The products should be stored in a dry, well-ventilated room. Keep away from any corrosive gas.

WARRANTY

The service life of the TelerPM lancing device is no more than 3000 times or 3 years, whichever comes first. A malfunctioning lancing device should be returned to your supplier for replacement.

Distributed by:

Mio Labs Inc.
#1023, ZGC Innovation Center, 4500 Great America Pkwy,
Santa Clara, CA 95054

24/7 Customer Support Tel:(833)445-5666

Number:
Effective date: